

 **NATURALBOND**



**ALÜMİNYUM KOMPOZİT PANEL
RENK KARTELASI**

*ALUMINIUM COMPOSITE PANELS
COLOR CHART*

 **ASAŞ**

METALİK RENKLER / *Metallic Colors*



NB 090
Metalik Silver
Metallic Silver



NB 092
Parlak Metalik Silver
Shiny Metallic Silver



NB 080
Açık Bronz
Light Bronse



NB 011
Altın Sarısı
Pearl Gold



NB 081
Bakır
Copper

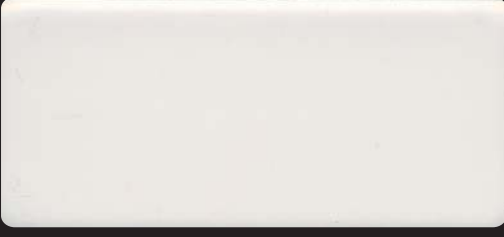


NB 050
Azul Mavi
Azul Blue

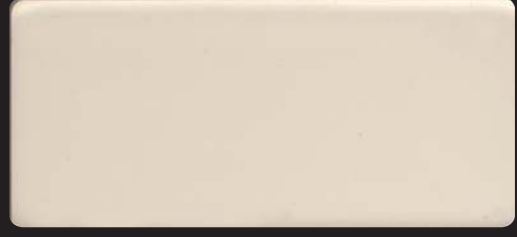


NB 702
Metalik Koyu Gri
Metallic Dark Grey

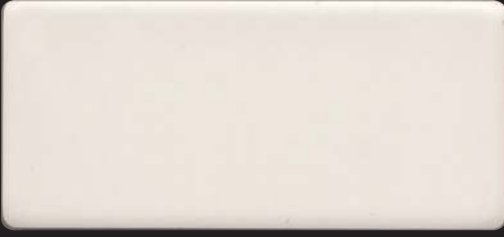
SOLID RENKLER / *Solid Colors*



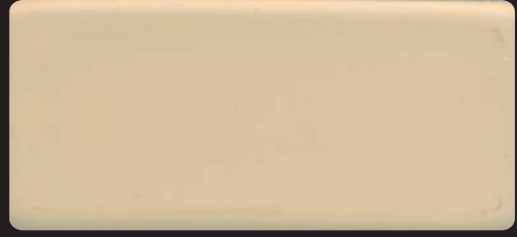
NB 901
Beyaz
Pure White



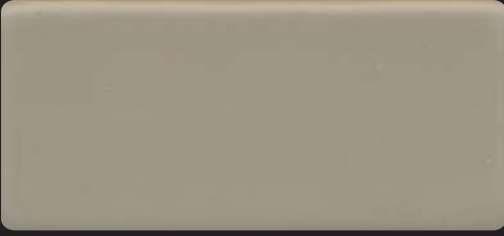
NB 104
İnci Beyaz
Pearl White



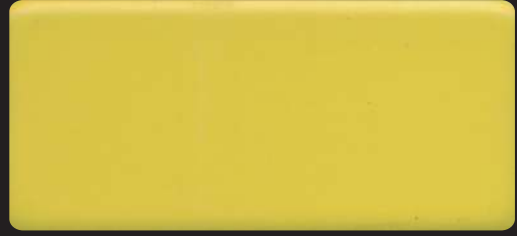
NB 912
Krem
Cream White



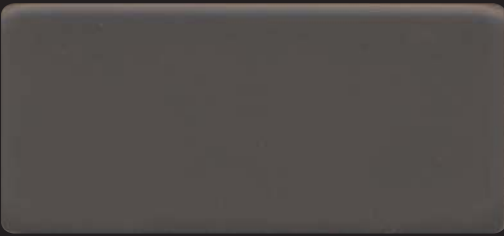
NB 101
Ivory Bej
Ivory Sand



NB 107
Gri Bej
Grey Beige



NB 102
Sarı
Yellow

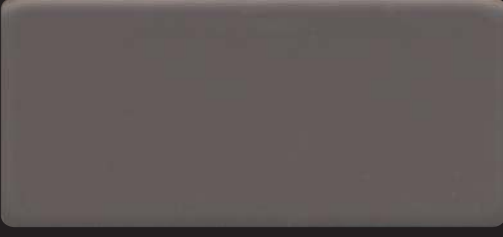


NB 951
Siyah
Graphite Black



NB 701
Platin Gri
Platinum Grey

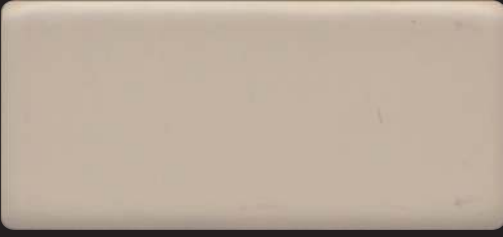
SOLID RENKLER / Solid Colors



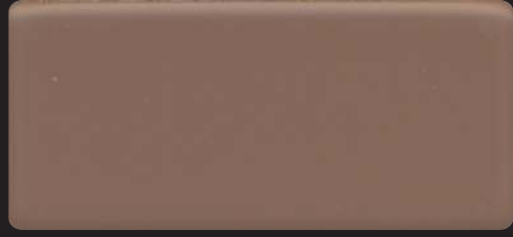
NB 703
Grafit Gri
Graphite Grey



NB 603
Yosun Yeşili
Moss Green



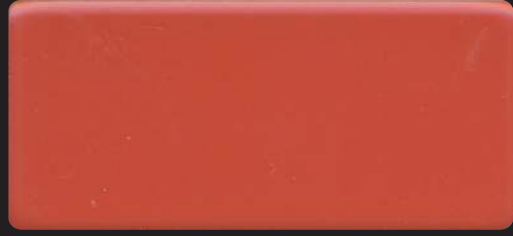
NB 604
Yeşil Gri
Grey Green



NB 381
Açık Kahverengi
Light Brown



NB 382
Toprak Kahve
Soil Brown



NB 302
Kırmızı
Traffic Red

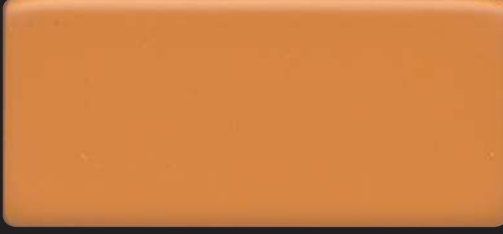


NB 304
Erika
Erika Violet

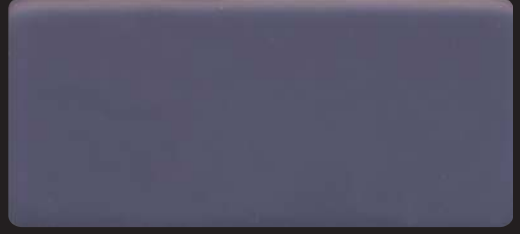


NB 301
Bordo
Brown Red

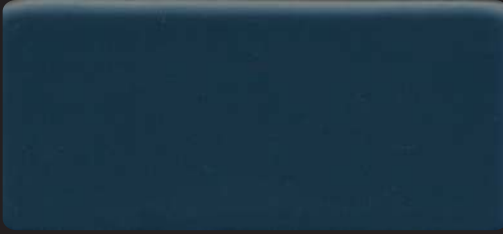
SOLID RENKLER / Solid Colors



NB 202
Turuncu
Orange



NB 503
Ultra Marine Mavi
Ultra Marine Blue



NB 504
Çelik Mavi
Steel Blue

- **Asař tarafından önerilen alt konstrüksiyon ve montaj detayları uygulandıđı taktirde Naturalbond alüminyum kompozit panelleri 20 yıl garantilidir.**
If the suggested sub construction and installation details are applied, Naturalbond aluminium composite panels are under 20 years of warranty.
- **Renk bütünlüğünü sağlayabilmek için bir defada sipariş verilmesi önerilir.**
To ensure the color consistency, placing total requirement in one order is recommended.
- **Lütfen kompozit panelleri ok yönünde kullanınız.**
Please applicate all the panels the arrow direction.
- **Projelerinizde 1250 mm ve 1500 mm'lik levhalar birlikte kullanılacak ise sipariş aşamasında yazılı olarak bilgi verilmesi gerekmektedir.**
Placing an order consist of different panel widths like 1250 mm, 1500 mm which will be used in the same project, please contact our sales representative.
- **Naturalbond / Fr Metalik Silver ve Beyaz örnekleri yanmaz olarak katalogta yer almıştır.**
Metallic Silver and Pure White samples in the catalog are also Fire Resistant as well (the Fr core white color).
- **Katalogtaki tüm renkler Fr olarak üretilebilmektedir.**
According to the request all colors from the catalog can be produced as Fire-Resistant.

PRESTİJ SERİLERİ / *Prestige Series*



NB 856
İnce Altın Meşe
Golden Oak - Fine Wood



NB 857
Kalın Altın Meşe
Golden Oak - Line Wood



NB 859
İnce Ceviz
Nussbaum - Fine Wood



NB 858
Kalın Maun
Mahogany



NB 870
Açık Kiraz
Cherry



NB 861
Siyah Metalik
Black Metallic



NB 860
Silver Metalik Parlak Mavi
Silver Light Blue Metallic

Kompozit Panel Ebatları *Panel Dimensions*

Kompozit Panel Kalınlıkları <i>Thickness Of Composite Panel</i>	3 mm - 4 mm - 5 mm - 6 mm
Maksimum Üretim Boyu <i>Maximum Production Length</i>	6000 mm
Standart Üretim Ebatları <i>Standard Panel Dimensions</i>	1250 mm * 3200 mm * 4 mm 1500 mm * 3200 mm * 4 mm

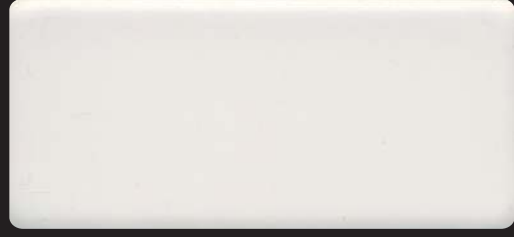
1250 mm Genişlik / *Width*
1500 mm Genişlik / *Width*

Tüm Renkler / All Colors
NB 901 - NB 912 - NB 090
NB 702 - NB 703 - NB 080
NB 104 - NB 951

YANGINA DAYANIKLI / Fire Resistant



NB-FR 090
Metalik Silver
Metallic Silver



NB-FR 901
Beyaz
White

Kimyasal Kompozisyon Chemical Composition

Si	Fe	Cu	Mn	Mg	Cr	Zn	Ti
0.6	0.7	0.3	1-1.5	0.2-0.6	0.10	0.25	0.10

Kullanılan Alüminyum Levhanın Mekanik Özellikleri Mechanical Properties Of Aluminium

Çekme Mukavemeti (Rm) <i>Tensile Strength (Rm)</i>	186 MPa (min 130 MPa)
Akma Mukavemeti (Rp 0.2) <i>Yield Strength (Rp 0.2)</i>	148 MPa (min 90 MPa)
Yüzde Uzama (A50%) <i>Elongation</i>	6.8 (min 5)
Elastikiyet Modülü <i>Modulus Of Elasticity</i>	70000 MPa

Üretim Toleransları Tolerances

Kompozit Panel Kalınlığı <i>Thickness Of Composite Panel</i>	± 0.2 mm
Kompozit Panel Geniřliđi <i>Width Of Composite Panel</i>	± 2.0 mm
Kompozit Panel Boyu <i>Length Of Composite Panel</i>	± 4.0 mm
Dişoganal Fark <i>Diagonal Difference</i>	max 3.0 mm
Dođrusallık (Ende Ve Boyda) <i>Linearity (On Width And Length)</i>	± 0.2 mm
Uzama Miktarı (A%50) <i>Elongation</i>	1.2 mm/m (50 ° C)

Eđiklik Bow

Panel Boyu <i>Panel Length</i>	< 1500 mm	max 5 mm
Panel Boyu <i>Panel Length</i>	1500 mm - 3000 mm	max 7 mm
Panel Boyu <i>Panel Length</i>	> 3000 mm	max 10 mm





ASAŞ Alüminyum Sanayi ve Ticaret A.Ş.

Genel Müdürlük / Headquarters
Rüzgarlı Bahçe Mah., Kumlu Sok., No: 2
Asaş İş Merkezi, 34810 Kavacık
Beykoz - İstanbul, Türkiye
T +90 216 680 07 80 **F** +90 216 680 07 81

Alüminyum Profil ve Kompozit Panel Üretim Tesisleri
/ Aluminium Profile and Composite Panel Production Facilities
Küçücek İstiklal Mah., Kışla Alanı Cad.,
No: 2-2/1, 54400 Akyazı - Sakarya, Türkiye
T +90 264 462 47 92 **F** +90 264 462 47 96
asastr.com